

# Woodford

TIMBER PRODUCTS

20<sup>th</sup>

ANNIVERSARY

1997 - 2017



FENCING - GATES - PLAY EQUIPMENT - CABINS - DECKING - FURNITURE

**2017 PRODUCT BROCHURE**

# Woodford Timber Products

Located midway between Ballyconnell and Carrigallen,  
County Cavan, the beautiful land of lakes.

## Then.....

Our name was taken from the Woodford River which forms part of the magnificent Shannon-Erne Waterway, and which flows just to the west of our site boundaries. Woodford (Irish: An Ghráig, meaning "the village")

The manufacturing plant and timber yard that stands here today is down to a vision held by the owner, Alan Richardson, who purchased the site back in 1997. With his extensive knowledge of the timber industry and associated processes, gained over some 50+ years within the industry, Alan identified a niche in the market – the severe lack of Irish products available. The conception, design, prototyping and marketing of the Woodford brand had begun.

## ..... and now

20 years on, Woodford's team of long serving colleagues and family members have translated their skills and experience into a wide range of prestigious product offerings to meet the ever-changing needs of retailers, contractors and individuals. The majority of these products are designed and manufactured in-house, and both our processes and products are constantly monitored and re-evaluated with the focus on quality and continuous product improvement.



Today, our 7 acre site now boasts its own state-of-the-art manufacturing and joinery facilities, producing made to measure gates, fencing, bespoke garden buildings, garden furniture, children's play equipment etc.

We also have our own timber treatment plant on site which is operated using the most up-to-date-control systems which monitor and control the treatment parameters to ensure that your timber is consistently treated to specification in a controlled environment. This enables us to offer a long, maintenance - free service life on ground contact material like posts, sleepers, decking etc.

For after care and finishing touches, our on-site shop stocks hardware, tools and wood care products to further enhance/prolong your Woodford item.

Buying from Woodford helps to support a local company employing local people that is equally proud to support the local community.



# Brochure Contents



Page 4

## Fencing

## Cladding & Construction



Page 16



Page 18

## Decking

## Garden Accessories



Page 22



Page 30

## Cabins

## Gates & Hardware



Page 36



Page 50

## Jungle Gym

# Fence Panels at Woodford



## Round Top Panel

- Planed & Pressure Treated Timber
- 125 x 19mm Boards
- 75 x 44mm Splay Rail
- Also suitable for Concrete H Post

<b>RT64T</b>	1.8m x 1.2m
<b>RT65T</b>	1.8m x 1.5m
<b>RT66T</b>	1.8m x 1.8m
<b>RT64C</b>	1.8m x 1.2m <b>For Concrete</b>
<b>RT65C</b>	1.8m x 1.5m <b>For Concrete</b>
<b>RT66C</b>	1.8m x 1.8m <b>For Concrete</b>



## Round Top Double Sided Panel

- Planed & Pressure Treated Timber
- 125 x 19mm Boards
- 75 x 44mm Splay Rail
- Suits Timber or Concrete H Post
- Looks the same front & back

<b>RT64DS</b>	1.8m x 1.2m
<b>RT65DS</b>	1.8m x 1.5m
<b>RT66DS</b>	1.8m x 1.8m



## Double Sided Panel

- Planed & Pressure Treated Timber
- 125 x 19mm Boards
- 75 x 44mm Splay Rail
- Suits Timber or Concrete H Post
- Looks the same front & back

<b>DSP64</b>	1.8m x 1.2m
<b>DSP65</b>	1.8m x 1.5m
<b>DSP66</b>	1.8m x 1.8m

**NEW**

NEW



## "EZ" TGV Panel

- Choose a height to suit you
- Ideal for privacy
- Douglas Fir Rebated Post
- 145 x 32mm TGV Boards
- 75 x 32mm Capping
- Looks the same front & back

<b>TGV186</b>	1.8m 150 x 35mm <b>TGV Board</b>
<b>PST655R</b>	1.8m 125 x 125mm <b>Rebated Post</b>
<b>PST855R</b>	2.4m 125 x 125mm <b>Rebated Post</b>
<b>CAP183</b>	1.8m 75 x 35 <b>Capping</b>



NEW



## TGV Elite Panel

- 100 x 44mm Framing
- 125 x 22mm TGV Boards
- Heavy Duty
- Stainless Steel Nails
- Imported Pressure Treated Timber
- Also suitable for Concrete H Posts

<b>TGVP64E</b>	1.8m x 1.2m
<b>TGVP65E</b>	1.8m x 1.5m
<b>TGVP66E</b>	1.8m x 1.8m



## Round Top Closed Panel

- 100 x 35mm Framing
- 100 x 19mm Boards
- Durable
- Pressure Treated
- Also suitable for Concrete H Posts

<b>RTC65T</b>	1.8m x 1.5m
<b>RTC66T</b>	1.8m x 1.8m

# Fence Panels at Woodford



## Tanascreen Panel

- 47 x 35mm Framing
- 100 x 8mm Boards
- Durable
- Pressure Treated
- Also suitable for Concrete H Posts

<b>TAS63</b>	1.8m x 0.9m
<b>TAS64</b>	1.8m x 1.2m
<b>TAS65</b>	1.8m x 1.5m
<b>TAS66</b>	1.8m x 1.8m



## Round Top Fence

- Planed & Pressure Treated Timber
- 100 x 19mm Boards
- 100 x 22mm Backing Rail
- Imported Timber

<b>RTPK62</b>	1.8m x 0.6m
<b>RTPK63</b>	1.8m x 0.9m
<b>RTPK64</b>	1.8m x 1.2m



## Picket Fence

- Planed & Pressure Treated Timber
- 75 x 22mm Boards
- 100 x 22mm Backing Rail
- Imported Timber

<b>PK62</b>	1.8m x 0.6m
<b>PK63</b>	1.8m x 0.9m
<b>PK64</b>	1.8m x 1.2m



## Candle Top Fence

- Planed & Pressure Treated Timber
- 75 x 22mm Boards
- 100 x 22mm Backing Rail
- Imported Timber

<b>CTF62</b>	1.8m x 0.6m
<b>CTF63</b>	1.8m x 0.9m
<b>CTF64</b>	1.8m x 1.2m





## Madrid Panel

- Looks the same front & back
- Tenon & Mortice Jointed Framing
- Durable
- Pressure Treated

**MAD64** 1.8m x 1.2m  
**MAD66** 1.8m x 1.8m



## Reinas Panel

- Looks the same front & back
- Tenon & Mortice Jointed Framing
- Durable
- Pressure Treated
- Decorative Lattice

**REINAS** 1.8m x 1.8m



## Reinas 1 Panel

- Looks the same front & back
- Tenon & Mortice Jointed Framing
- Durable
- Pressure Treated
- Decorative Lattice

**REINAS1** 1.8m x 1.8m



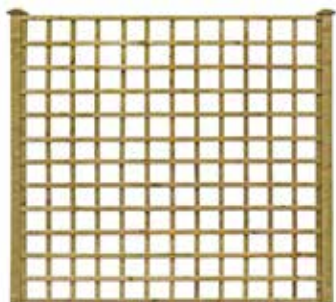
## Neris Panel

- Looks the side front & back
- Tenon & Mortice Jointed Framing
- Durable
- Pressure Treated
- Decorative Lattice

**NERIS** 1.8m x 1.8m



# Trellis at Woodford



## Open Square Trellis

- Planed & Pressure Treated
- 120mm Square Sizes
- 35 x 16mm Laths

<b>TAT61</b>	1.8m x 0.3m
<b>TAT62</b>	1.8m x 0.6m
<b>TAT63</b>	1.8m x 0.9m
<b>TAT64</b>	1.8m x 1.2m
<b>TAT65</b>	1.8m x 1.5m
<b>TAT66</b>	1.8m x 1.8m



## Closed Square Trellis

- Planed & Pressure Treated
- 75mm Square Sizes
- 35 x 16mm Laths

<b>CST61</b>	1.8m x 0.3m
<b>CST62</b>	1.8m x 0.6m
<b>CST63</b>	1.8m x 0.9m
<b>CST64</b>	1.8m x 1.2m
<b>CST65</b>	1.8m x 1.5m
<b>CST66</b>	1.8m x 1.8m

## Trellis Tops - For Open & Closed Square Trellis all sizes available

DOME TOP



CONCAVE TOP



OMEGA TOP



## Fan Trellis

- Planed & Pressure Treated
- 35 x 16mm Laths

<b>FTR62</b>	1.8m x 0.6m
--------------	-------------



# Fence Posts at Woodford



## Timber H Posts

- Planed & Pressure Treated

**THP844** 2.4m 97 x 97mm



## Concrete H Posts & Gravel Boards

**CHP644** 1.8m 125 x 100mm  
**CHP844** 2.4m 125 x 100mm  
**CHP944** 2.7m 125 x 100mm  
**CGRAVEL** 1.8m 300 x 50mm **Smooth**



## Moulded Posts

- Planed & Pressure Treated
- Eased Edges
- Imported Quality Timber

**P533M** 1.5m 75 x 75mm  
**P633M** 1.8m 75 x 75mm  
**P833M** 2.4m 75 x 75mm  
**P544M** 1.5m 97 x 97mm  
**P644M** 1.8m 97 x 97mm  
**P844M** 2.4m 97 x 97mm  
**P1044M** 3.0m 97 x 97mm  
**P1244M** 3.6m 97 x 97mm

# Fence Posts at Woodford



## Weathered Square Post

- Pressure Treated
- Sloped Top
- Sawn Finish
- \* Incised

<b>PST544W*</b>	1.5m 95 x 95mm
<b>PST644W*</b>	1.8m 95 x 95mm
<b>PST844W*</b>	2.4m 95 x 95mm
<b>PST1044W*</b>	3.0m 95 x 95mm
<b>PST543W</b>	1.5m 95 x 75mm
<b>PST643W</b>	1.8m 95 x 75mm



## Pointed

- Pressure Treated
- \* Incised
- Sawn Finish

<b>PST433</b>	1.2m 75 x 75mm	<b>PST844P*</b>	2.4m 95 x 95mm
<b>PST533</b>	1.5m 75 x 75mm	<b>PST643P</b>	1.8m 95 x 75mm
<b>PST633</b>	1.8m 75 x 75mm	<b>PST653P</b>	1.8m 125 x 75mm
<b>PST833</b>	2.4m 75 x 75mm	<b>PST663P</b>	1.8m 150 x 75mm
<b>PST544P*</b>	1.5m 95 x 95mm	<b>PST853P</b>	2.4m 125 x 75mm
<b>PST644P*</b>	1.8m 95 x 95mm	<b>PST863P</b>	2.4m 150 x 75mm



## Tree Stakes

- Pressure Treated
- Sawn Finish
- Pointed

<b>PST415</b>	1.2m 35 x 35mm
<b>PST515</b>	1.5m 35 x 35mm
<b>PST615</b>	1.8m 35 x 35mm
<b>PST422</b>	1.2m 50 x 50mm
<b>PST522</b>	1.5m 50 x 50mm
<b>PST622</b>	1.8m 50 x 50mm



## Round Posts

- Imported, Pressure Treated
- Machine Rounded
- \* Incised
- \*\* Redwood

<b>RP42</b>	1.2m x 50mm	<b>RP63*</b>	1.8m x 75mm
<b>RP52</b>	1.5m x 50mm	<b>RP590*</b>	1.5m x 90mm
<b>RP62</b>	1.8m x 50mm	<b>RP690*</b>	1.8m x 90mm
<b>RP56</b>	1.5m x 60mm	<b>RP124</b>	3.6m x 100mm
<b>RP43</b>	1.2m x 75mm	<b>RPS554</b>	1.65m x 100mm <b>Split</b>
<b>RP53*</b>	1.5m x 75mm	<b>RP75**</b>	2.1m x 125mm
<b>RP553*</b>	1.65m x 75mm	<b>RP86**</b>	2.4m x 150mm

\* Incised prior to treatment which helps to achieve the very best penetration of preservative for ground contact timber.

# Fencing at Woodford



## Rails - Available Sawn or Planed

- Pressure Treated
- Imported Timber

### Sawn

<b>3642T</b>	3.6m 100 x 44mm
<b>4242T</b>	4.2m 100 x 44mm
<b>4842T</b>	4.8m 100 x 44mm
<b>3662T</b>	3.6m 150 x 44mm
<b>4262T</b>	4.2m 150 x 44mm
<b>4862T</b>	4.8m 150 x 44mm

### Planed

<b>3642PT</b>	3.6m 100 x 44mm
<b>4242PT</b>	4.2m 100 x 44mm
<b>4842PT</b>	4.8m 100 x 44mm
<b>3662PT</b>	3.6m 150 x 44mm
<b>4262PT</b>	4.2m 150 x 44mm
<b>4862PT</b>	4.8m 150 x 44mm

## Special Top Post



## Chunky Post & Rail



## Woodford Top Post



<b>3662MT</b>	3.6m 150 x 44mm	<b>Rails</b>
<b>4862MT</b>	4.8m 150 x 44mm	<b>Rails</b>

<b>STP655N</b>	1.8m 125 x 125mm	<b>Special Top Post</b>
<b>STP666N</b>	1.8m 150 x 150mm	<b>Special Top Post</b>

<b>WGP655N</b>	1.8m 125 x 125	<b>Woodford Top Post</b>
<b>WGP666N</b>	1.8m 150 x 150	<b>Woodford Top Post</b>

- Imported Pressure Treated Moulded Rails
- Douglas Fir Posts
- Full or Individual Mortice available



# Fencing at Woodford



## D Rail

- Pressure Treated
- Planed all round
- Easy to install
- Imported timber

<b>DRAI12</b>	3.6m 100 x 35mm
<b>DRAI14</b>	4.2m 100 x 35mm
<b>DRAI16</b>	4.8m 100 x 35mm
<b>DRAI126</b>	3.6m 150 x 35mm
<b>DRAI146</b>	4.2m 150 x 35mm
<b>DRAI166</b>	4.8m 150 x 35mm



## Splay Rail

- 75 x 44mm Rail
- Pressure Treated
- Angled to aid water run off
- Ideal for use as a backing rail for vertical fence boards

<b>SP36</b>	3.6m 75 x 44mm
<b>SP42</b>	4.2m 75 x 44mm
<b>SP48</b>	4.8m 75 x 44mm



## Tanascreen Board

- 100 x 8mm
- Pressure Treated

<b>TAS18</b>	1.8m 100 x 8mm
--------------	----------------



## Post Cap & Ball Final

- Pressure Treated

<b>CAP33</b>	to fit 75 x 75mm <b>post</b>
<b>CAP43</b>	to fit 95 x 75mm <b>post</b>
<b>CAP44</b>	to fit 95 x 95mm <b>post</b>
<b>CAP53</b>	to fit 125 x 75mm <b>post</b>
<b>CAP63</b>	to fit 150 x 75mm <b>post</b>

<b>BALL33</b>	75 x 75mm
<b>BALL44</b>	95 x 95mm

<b>BASE33</b>	to fit 75 x 75mm <b>post</b>
<b>BASE44</b>	to fit 95 x 95mm <b>post</b>



## Round Top Board

- Planed & Pressure Treated

<b>RTB941</b>	0.9m 100 x 19mm
<b>RTB124</b>	1.2m 100 x 19mm
<b>RTB125</b>	1.2m 125 x 22mm
<b>RTB155</b>	1.5m 125 x 22mm
<b>RTB185</b>	1.8m 125 x 22mm

<b>RTB12N</b>	1.2m 150 x 22mm <b>Native</b>
<b>RTB16N</b>	1.6m 150 x 22mm <b>Native</b>
<b>RTB18N</b>	1.8m 150 x 22mm <b>Native</b>
<b>RTB24N</b>	2.4m 150 x 22mm <b>Native</b>



## Weather Board

- Straight Edged
- Top angled to aid water run off
- Pressure Treated
- Available in imported timber on request

<b>WTB12N</b>	1.2m 150 x 22mm <b>Native</b>
<b>WTB16N</b>	1.6m 150 x 22mm <b>Native</b>
<b>WTB18N</b>	1.8m 150 x 22mm <b>Native</b>
<b>WTB21N</b>	2.1m 150 x 22mm <b>Native</b>
<b>WTB24N</b>	2.4m 150 x 22mm <b>Native</b>



## Picket Board

- Planed & Pressure Treated
- Imported Timber
- Traditional style
- Top rounded for safety

<b>PB231</b>	0.6m 75 x 22mm
<b>PB331</b>	0.9m 75 x 22mm
<b>PB431</b>	1.2m 75 x 22mm
<b>PB631</b>	1.8m 75 x 22mm
<b>PB186N</b>	1.8m 150 x 22mm <b>Native</b>



## Candle Top Board

- Planed & Pressure Treated
- Imported Timber
- Classic style

<b>CTB341</b>	0.9m 100 x 22mm
<b>CTB441</b>	1.2m 100 x 22mm
<b>CTB551</b>	1.5m 125 x 22mm
<b>CTB651</b>	1.8m 125 x 22mm

# Restol™ at Woodford



## Restol™ Wood Oil offers the perfect protection all year round.

It contains an active UV filter that preserves the colour and also forms a protective layer against moisture.

Restol™ Wood Oil is based on natural linseed oils, making external wood, water-repellent and weather resistant.

- It is easy to apply and quick drying.
- It will protect your fencing, log cabin and is also highly suitable for your garden furniture and wooden play equipment.
- It is also suitable for use on untreated wood, impregnated wood or hardwood.
- It can be applied by brush, roller or spray and has a maximum coverage of 12 - 16m<sup>2</sup> per litre.

## Properties of Restol™



Protection against the sun



Protection against moisture



Protection against ageing



Water-repellent



No sanding required



For brush, roller and spray



Touch-dry in 4 to 6 hours



Silk finish



Max. 12-16 m<sup>2</sup> coverage per litre

RESTOLB  
RESTOLNB  
RESTOLEB  
RESTOLNG  
RESTOLN

Brown 2.5L  
Natural Brown 2.5L  
Ebony Black 2.5L  
Garden Timber Green 2.5L  
Natural UV Extra 2.5L



Brown



Natural Brown



Ebony Black



Garden Timber Green



Natural UV Extra





# FENCEMATE



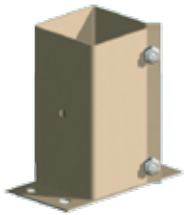
## Swift Clamp™ Drive In Post Support

<b>MP7024</b>	70 x 70mm x 600mm	<b>MP9024</b>	90 x 90mm x 600mm
<b>MP3324</b>	75 x 75mm x 600mm	<b>MP3324G</b>	75 x 75mm x 600mm <b>Galvanised</b>
<b>MP3330</b>	75 x 75mm x 750mm	<b>MP4430G</b>	100 x 100 mm x 750mm <b>Galvanised</b>



## Swift Clamp™ Bolt Downs

<b>MP33</b>	75 x 75mm	<b>MP70G</b>	70 x 70mm <b>Galvanised</b>
<b>MP44</b>	100 x 100mm	<b>MP90G</b>	90 x 90mm <b>Galvanised</b>
<b>MP33G</b>	75 x 75mm <b>Galvanised</b>	<b>MP44G</b>	100 x 100mm <b>Galvanised</b>



## Swift Clamp™ Flush Fit Bolt Downs

<b>MPFF33</b>	75 x 75mm
<b>MPFF44</b>	100 x 100mm



## Swift Clamp™ Concrete In

<b>MPCI33</b>	75 x 75mm
<b>MPCI44</b>	100 x 100mm

## Screw In Panel Clip

**MPLS**



## Swift Clamp™ Repair Spur

<b>REPA33</b>	75 x 75mm
<b>REPA44</b>	100 x 100mm

## Panel Clip

**MCT38**



# Cladding at Woodford



## Shiplap Board

- Planed & Pressure Treated
- Imported Timber
- Classical Cladding
- Coverage 110mm

<b>SHIP185</b>	1.8m 125 x 22mm
<b>SHIP245</b>	2.4m 125 x 22mm
<b>SHIP365</b>	3.6m 125 x 22mm
<b>SHIP485</b>	4.8m 125 x 22mm
<b>SHIP51</b>	5.1m 125 x 22mm
<b>SHIP54</b>	5.4m 125 x 22mm



## Log Effect Board

- Planed & Pressure Treated
- Imported Timber
- Superior Cladding
- Coverage 140mm

<b>LOG36</b>	3.6m 150 x 35mm
<b>LOG48</b>	4.8m 150 x 35mm
<b>LOG54</b>	5.4m 150 x 35mm



## TGV Boards

- Planed & Pressure Treated
- Imported Timber
- Superior Cladding
- 125mm gives 115mm Coverage
- 150mm gives 135mm Coverage

Available in 125 x 22, 150 x 35 and 150 x 44  
List of current lengths on request



# Construction Timber at Woodford



## Haybarn

- Pressure Treated
- Available in Imported or Native Timber
- Also available in longer sizes: 5.4m - 7.2m

<b>4843T</b>	4.8m 100 x 75mm
<b>4853T</b>	4.8m 125 x 75mm
<b>4863T</b>	4.8m 150 x 75mm
<b>4873T</b>	4.8m 175 x 75mm
<b>4892T</b>	4.8m 225 x 44mm
<b>4893T</b>	4.8m 225 x 75mm



## Roof Battens

- Imported Timber

<b>RL4821</b>	4.8m 50 x 22mm <b>Untreated</b>
<b>RL4821T</b>	4.8m 50 x 22mm <b>Treated</b>
<b>RL48215</b>	4.8m 50 x 35mm <b>Untreated</b>
<b>RL48215T</b>	4.8m 50 x 35mm <b>Treated</b>



## Plywood

- List of sizes and types available on request



## Screws

<b>DS40200</b>	40mm 200 <b>per box</b>
<b>DS50250</b>	50mm 250 <b>per box</b>
<b>DS65250</b>	65mm 250 <b>per box</b>
<b>DS75350</b>	75mm 250 <b>per box</b>
<b>DS100</b>	100mm 100 <b>per box</b>

- Hex Square Drive with free bit

<b>TL450</b>	100mm 50 <b>per box</b>
<b>TL650</b>	150mm 50 <b>per box</b>



# Decking at Woodford



## Deck Boards

- Imported Timber and Pressure Treated
- Double Sided - coarse rib one side, fine rib the other

<b>DK366</b>	3.6m 150 x 35mm
<b>DK426</b>	4.2m 150 x 35mm
<b>DK486</b>	4.8m 150 x 35mm
<b>DK546</b>	5.4m 150 x 35mm

<b>DK365</b>	3.6m 125 x 32mm
<b>DK485</b>	4.8m 125 x 32mm



## Deck Joists

- Imported Timber
- Planed and Pressure Treated

<b>JS36</b>	3.6m 100 x 44mm
<b>JS42</b>	4.2m 100 x 44mm
<b>JS48</b>	4.8m 100 x 44mm
<b>JS54</b>	5.4m 100 x 44mm

<b>JS366</b>	3.6m 150 x 44mm
<b>JS426</b>	4.2m 150 x 44mm
<b>JS486</b>	4.8m 150 x 44mm
<b>JS546</b>	5.4m 150 x 44mm



## Handrail

- Imported Timber and Pressure Treated
- Grooved to suit panels and spindles
- Universal (can be used as bottom rail also)

<b>HR36</b>	3.6m 100 x 44mm
<b>FILL36</b>	3.6m 35 x 10mm <b>Filler Pieces</b>

# Decking at Woodford



## Deck Panel

- Pressure treated

**DECKPA** 1.79m x 0.765m



## Chamfered Spindles

- Planed imported timber finish with eased corners
- Pressure treated
- Filler piece required

**SPIN44** 0.9m 42 x 42mm



## Deck Post

- Planed Imported Timber
- Eased Corners
- Decorative Top
- Pressure treated

**DKP12** 1.2m 100 x 100mm  
**DKP15** 1.5m 100 x 100mm  
**DKP18** 1.8m 100 x 100mm  
**DKP24** 2.4m 100 x 100mm



# SAiGE at Woodford



**SAiGE Composite Decking is a highly stylish, low maintenance alternative to standard decking.**

The deck boards are available in hollow or solid board and have a smooth alternative side (brush finish) which gives customers a number of options for their decking.



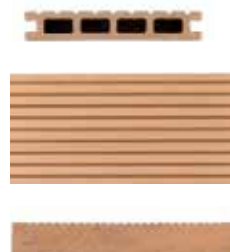
## Mid Groove, Hollow or Solid Profile



Grey Mid Groove



Oak Mid Groove



Redwood Mid Groove



Charcoal Mid Groove





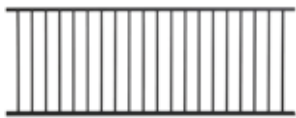
# Modular Railings at Woodford



NEW

## This modular steel railing system is virtually maintenance free.

With the ability to resist the effects of weathering, this modular steel railing is coated with a specialised mixture that encompasses a premium powder coating loading with UV inhibitors and a heavy zinc galvanisation treatment. Clean classical appearance and is simple and quick to install.



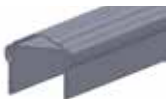
### Metal Railing Panel - available sizes

1.82m x 1.02m  
2.44m x 1.02m



### Accent Panel Rail

2.44m x 0.125mm



### Hand Rail

2.44m long



### Post with Mounting Kit

1.14m 75 x 75mm



### Panel Fixing Bracket

Pack of 4



# Garden Furniture at Woodford



## Benches

- Imported KD Timber
- Planed & Pressure Treated
- Stainless Steel Fixings
- Designed for ease of assembly
- Flat Packed

**BENCH2** Bench 2 Seater - 1.4m Long

**BENCH3** Bench 3 Seater - 1.7m Long



## Patio Picnic Table

- Imported KD Timber
- Planed & Pressure Treated
- Stainless Steel Fixings
- Designed for ease of assembly
- Hole for Parasol
- Flat Packed

**PATIOT** 1.8m x 0.75m



## Garden Furniture at Woodford



### Carver Chair

- Imported KD Timber
- Planed & Pressure Treated
- Stainless Steel Fixings
- Designed for ease of assembly
- Flat Packed

**BENCH1** Chair 0.75m wide



### Round Patio Table

- Imported KD Timber
- Planed & Pressure Treated
- Stainless Steel Fixings
- Designed for ease of assembly
- Hole for Parasol
- Flat Packed

**PATIOR** 1.35m Diameter

# Garden Furniture at Woodford



## Round Picnic Table

- Imported KD Timber
- Planed & Pressure Treated
- Stainless Steel Fixings
- 44mm thickness
- Hole for Parasol
- Flat Packed

**RDPT**

2.4m sq - 8 seater



## Oblong Table

- Planed & Pressure Treated KD Timber
- Stainless Steel Fixings
- Available in 44mm or 35mm
- Tilting seats for those rainy days!
- Handy table top-hole for a parasol
- 1.8m sq - 6 seater
- Flat Packed

**PTOBL**

44mm

**PTO35**

35mm





## Wheelchair Accessible Table

- Imported KD Timber
- Planed & Pressure Treated
- Stainless Steel Fixings
- 2.1m x 1.8m overall

**WTABLE**

3 seater +  
1 wheelchair user



## Garden Swing

- Imported KD Timber
- Planed & Pressure Treated
- Stainless Steel Fixings
- Flat Packed
- Handy ledge for drinks

**GSWING** 2 Seater



# Arches at Woodford



## Woodford Arch

- Imported KD Timber
- Planed & Pressure Treated
- Stainless Steel Fixings
- Available in 75mm or 97mm Posts
- Flat Packed

<b>ARCHW</b>	1.0m x 0.6m x 2.4m H
<b>ARCHWH</b>	1.2m x 0.65m x 2.4m H



## Woodford Arbour

- Imported KD Timber
- Planed & Pressure Treated
- Stainless Steel Fixings
- Available in 75mm or 97mm Posts
- Flat Packed

<b>AWSW</b>	1.0m x 0.6m x 2.4m H
<b>AWSWH</b>	1.2m x 0.65m x 2.4m H



## Eden Arch

- Imported KD Timber
- Planed & Pressure Treated
- Stainless Steel Fixings
- Available in 75mm or 97mm Posts
- Flat Packed

<b>EDEN</b>	1.0m x 0.6m x 2.4m H
<b>EDENH</b>	1.2m x 0.65m x 2.4m H



## Eden Arbour

- Imported KD Timber
- Planed & Pressure Treated
- Stainless Steel Fixings
- Available in 75mm or 97mm Posts
- Flat Packed

<b>EDEN</b>	1.0m x 0.6m x 2.4m H
<b>EDENH</b>	1.2m x 0.65m x 2.4m H



## Plaza Planter - Square

- Contemporary Design
- Planed & Pressure Treated Timber
- Available in three sizes

<b>PLAZAS</b>	Small - 0.5m sq x 0.47m h
<b>PLAZAM</b>	Medium - 0.65m sq x 0.62m h
<b>PLAZAL</b>	Large - 0.8m sq x 0.9m h



## Plaza Planter - Rectangular

- Contemporary Design
- Planed & Pressure Treated Timber

<b>PLAZAR</b>	0.9m W x 0.5m D x 0.47m H
---------------	---------------------------



## Trellis Planter

- Unique corner joint system
- Planed & Pressure Treated Timber
- Easy assembly
- Flat Packed

<b>TPLAN</b>	1.2m W x 0.6m D x 1.2m H
--------------	--------------------------



## Decking Planters

- Planed & Pressure Treated Timber
- Available in two sizes

<b>TUBMED</b>	Medium - 0.54m x 0.45m x 0.3m h
<b>TUBLGE</b>	Large - 0.6m x 0.53m x 0.45m h

# Planters at Woodford



## Window Box

- Planed & Pressure Treated Timber
- Mitred corners and drainage holes in base

**WBDK6**

0.6m x 0.2m x 0.15 H

**WBDK9**

0.9m x 0.2m x 0.15m H



## Veggie Box

- Imported Timber
- Planed & Pressure Treated
- Designed to sit directly on soil/grass
- No floor included
- Simple to assembly, no fixings required
- Flat Packed

**VBOX6**

1.8m x 0.9m x 0.28m H

**VBOX8**

2.4m x 0.9m x 0.28m H



## Raised Veggie Box

- Imported Timber
- Planed & Pressure Treated
- Flat Packed

**VBOXR63**

1.8m x 0.9m x 0.78H





## Garden Accessories at Woodford



### Log Roll

- Pressure Treated Timber
- Available in three heights

<b>LR6150</b>	1.8m x 150mm
<b>LR6225</b>	1.8m x 225mm
<b>LR6300</b>	1.8m x 300mm



### Sleepers

- Imported Timber
- Pressure Treated Brown

<b>SL84</b>	2.4m 200 x 100
-------------	----------------



### Log Store

- Planed & Pressure Treated Timber
- Shiplap roof and sides
- Flat Packed

<b>LSTORE</b>	1.735m H x 1.52m H x 0.6m D
---------------	--------------------------------

NEW

# Cabins at Woodford



## Sorcha Cabin

- 42mm pressure treated imported timber
- Double doors (full length glazing)
- Full length windows
- Extra large side windows
- Double glazing
- Shingle roof
- Sold as flat pack with kit of instructions & fixings
- Pictured cabin - exterior size 5.1m (front) x 3.0m (sides)

<b>WCABINS1710</b>	5.1m (front) x 3.0m (sides)
<b>WCABINS1712</b>	5.1m (front) x 3.6m (sides)
<b>WCABINS1714</b>	5.1m (front) x 4.2m (sides)

As we are in charge of the entire production process, it may be possible to manufacture a bespoke building.

Size restrictions may apply - Please contact us for further details.







### Kerry Cabin

- 42mm pressure treated imported timber
- Double doors (full length glazing)
- Full length windows
- Double glazing, Georgian style
- Shingle roof
- Extra roof overhang - 0.6m
- Sold as flat pack with kit of instructions & fixings
- Pictured cabin - exterior size 4.8m (front) x 3.6m (sides)

<b>WCABINK1612</b>	4.8m (front) x 3.6m (sides)
<b>WCABINK1614</b>	4.8m (front) x 4.2m (sides)
<b>WCABINK1616</b>	4.8m (front) x 4.8m (sides)

### Unique Corner Joint System

- Requires no nails or fixings
- Very strong & sturdy
- Quick & easy to assemble





# Cabins at Woodford



## Roisin Cabin

- 32mm pressure treated imported timber
- Double doors (half glazing)
- Extra large side windows (single glazed)
- Shingle roof
- Sold as flat pack with kit of instructions & fixings
- Pictured cabin - exterior size 3.6m (front) x 3.0m (sides)
- Designed so the porch can be positioned on the LHS (pictured) or RHS

**WCABINR1210** 3.6m (front) x 3.0m (sides)

All windows and glazed doors in our range of cabins are fitted with toughened safety glass for added safety and security and are available in single or double glazing.







## Garden Shed - Heavy Duty

- 32mm pressure treated imported timber
- Single sheeted door
- Mineral felt roof
- Sold as flat pack with kit of instructions & fixings
- Pictured shed - exterior size 2.4m (front) x 2.4m (sides)

<b>WSHED68</b>	1.8m (front) x 2.4m (sides)
<b>WSHED88</b>	2.4m (front) x 2.4m (sides)
<b>WSHED810</b>	2.4m (front) x 3.0m (sides)
<b>WSHEDPW</b>	add a shed window

## Dog Kennel

- Planed & Pressure Treated Timber
- Flat packed
- Mineral felt roof

<b>DHOUSE</b>	Small - 0.9m x 0.9m x 0.8m H
<b>DHOUSEM</b>	Medium - 1.2m x 1.2m x 0.95m H
<b>DHOUSEL</b>	Large - 1.2m F x 1.5m x 1.1m H





## Cabins at Woodford







### Shingles

RED SHINGLES  
GREY SHINGLES  
GREEN SHINGLES



### Mineral Roofing Felt

FELTG 1m x 23m Green  
FELTR 1m x 23m Red

# Gates at Woodford



- Pressure treated imported timber
- Stainless steel fixings
- Can be made to measure to suit opening
- Posts and hardware sold separately
- Max Length 4.2m
- Traditional mortice and tenon joints
- Height 1.5m at Gooseneck, 1.2m at top rail
- Available in left or right hanging
- Available also in matching sets
- Heavy bottom rail available



## Goose Neck Gate

<b>GTP3G</b>	0.9m	<b>GTP7G</b>	2.1m
<b>GTP4G</b>	1.2m	<b>GTP8G</b>	2.4m
<b>GTP5G</b>	1.5m	<b>GTP10G</b>	3.0m
<b>GTP6G</b>	1.8m	<b>GTP12G</b>	3.6m



## Closed Goose Neck Gate

<b>GTP6CG</b>	1.8m
<b>GTP7CG</b>	2.1m
<b>GTP8CG</b>	2.4m
<b>GTP10CG</b>	3.0m
<b>GTP12CG</b>	3.6m



## Premium Field Gate



- Pressure treated imported timber
- Top rail 125 x 75mm, Rails 100 x 32mm
- Height 1.2m to top rail
- Available in left or right hanging
- Post & hardware sold seperately
- Max Length 4.2m

- Traditional mortice and tenon joints
- Stainless steel fixings
- Can be made to measure to suit opening
- Available also in matching sets
- Heavy bottom rail available

<b>GTP3</b>	0.9m	<b>GTP7</b>	2.1m
<b>GTP4</b>	1.2m	<b>GTP8</b>	2.4m
<b>GTP5</b>	1.5m	<b>GTP10</b>	3.0m
<b>GTP6</b>	1.8m	<b>GTP12</b>	3.6m

## Country Field Gate



- Pressure treated imported timber
- Rails 75 x 35mm
- Height 1.2m at top rail
- Universal - can hang on the left or right
- Posts and hardware sold separately

- Traditional mortice and tenon joints
- Stainless steel fixings
- Can be made to measure to suit opening
- Available also in matching sets
- Max Length 3.6m

<b>CFG3</b>	0.9m	<b>CFG7</b>	2.1m
<b>CFG4</b>	1.2m	<b>CFG8</b>	2.4m
<b>CFG5</b>	1.5m	<b>CFG10</b>	3.0m
<b>CFG6</b>	1.8m	<b>CFG12</b>	3.6m

# Premium Driveway Gates at Woodford

- We manufacture our gates from quality imported kiln dried timber
- We use traditional mortice and tenon joints and stainless steel fixings
- Standard height is 1.2m
- All driveway gates can be made to measure



## Allen Gate

<b>ALLEN5</b>	1.5m x 1.2m H
<b>ALLEN6</b>	1.8m x 1.2m H



## Fergus Gate

<b>FERG5</b>	1.5m x 1.2m H
<b>FERG6</b>	1.8m x 1.2m H



## Douglas Gate

<b>DOUG5</b>	1.5m x 1.2m H
<b>DOUG6</b>	1.8m x 1.2m H

# Premium Driveway Gates at Woodford

- Posts and hardware sold separately
- Code and price is for a single gate
- Gates are pressure treated and can be stained by customers to suit their needs
- Some gates pictured have been stained using Restol Wood Oil (see page 14)



## Foyle Gate

<b>FOYLE5</b>	1.5m x 1.2m H
<b>FOYLE6</b>	1.8m x 1.2m H



## Boyne Gate

<b>BOYNE5</b>	1.5m x 1.2m H
<b>BOYNE6</b>	1.8m x 1.2m H



## Glen Gate

<b>GLEN5</b>	1.5m x 1.2m H
<b>GLEN6</b>	1.8m x 1.2m H



# Premium Driveway Gates at Woodford

- We manufacture our gates from quality imported kiln dried timber
- We use traditional mortice and tenon joints and stainless steel fixings
- Standard height is 1.2m
- All driveway gates can be made to measure



## Annagh Gate

<b>ANNAGH5</b>	1.5m x 1.2m H
<b>ANNAGH6</b>	1.8m x 1.2m H



## Barrow Gate

<b>BARROW5</b>	1.5m x 1.2m H
<b>BARROW6</b>	1.8m x 1.2m H



## Mourne Gate

<b>MOURNE5</b>	1.5m x 1.2m H
<b>MOURNE6</b>	1.8m x 1.2m H

## Premium Driveway Gates at Woodford

- Posts and hardware sold separately
- Code and price is for a single gate
- Gates are pressure treated and can be stained by customers to suit their needs
- Some gates pictured have been stained using Restol Wood Oil (see page 14)



### Corrib Gate

**CORRIB5** 1.5m x 1.2m H

**CORRIB6** 1.8m x 1.2m H



### Shannon Gate

**SHAN5** 1.5m x 1.2m H

**SHAN6** 1.8m x 1.2m H



### Erne Gate

**ERNES** 1.5m x 1.2m H

**ERNE6** 1.8m x 1.2m H

# Gates at Woodford



## Breffni Gate - Single Sided

- Max 1.5m H x 1.8m W

<b>BREF5</b>	1.5m x 0.9m H
<b>BREF6</b>	1.8m x 0.9m H
<b>BREF54</b>	1.5m x 1.2m H
<b>BREF64</b>	1.8m x 1.2m H



## Carrick Gate - Single Sided

- Max 1.5m H x 1.8m W

<b>CAR5</b>	1.5m x 0.9m H
<b>CAR6</b>	1.8m x 0.9m H
<b>CAR54</b>	1.5m x 1.2m H
<b>CAR64</b>	1.8m x 1.2m H



## Grange Gate - Single Sided

<b>GRAN5</b>	1.5m x 0.9m H
<b>GRAN6</b>	1.8m x 0.9m H
<b>GRAN64</b>	1.8m x 1.2m H
<b>GRAN66</b>	1.8m x 1.8m H



## Manor Gate - Single Sided

<b>MAN5</b>	1.5m x 0.9m H
<b>MAN6</b>	1.8m x 0.9m H
<b>MAN64</b>	1.8m x 1.2m H
<b>MAN66</b>	1.8m x 1.8m H



- Posts and hardware sold separately
- All driveway gates can be made to measure
- Code and price is for a single gate
- Gates are pressure treated and can be stained by customers to suit their needs
- Some gates pictured have been stained using Restol Wood Oil (see page 14)
- All gates manufactured using imported timber



## Tory Gate

<b>TORY33</b>	0.9m x 0.9m H
<b>TORY34</b>	0.9m x 1.2m H
<b>TORY43</b>	1.2m x 0.9m H
<b>TORY44</b>	1.2m x 1.2m H

## Aran Gate

Available in either Round Top (pictured), Candle Top or Picket Top boards



### Round Top

<b>ARANR33</b>	0.9m x 0.9m H
<b>ARANR34</b>	0.9m x 1.2m H
<b>ARANR43</b>	1.2m x 0.9m H
<b>ARANR44</b>	1.2m x 1.2m H

### Picket Top

<b>ARANP33</b>	0.9m x 0.9m H
<b>ARANP34</b>	0.9m x 1.2m H
<b>ARANP43</b>	1.2m x 0.9m H
<b>ARANP44</b>	1.2m x 1.2m H

### Candle Top

<b>ARANC33</b>	0.9m x 0.9m H
<b>ARANC34</b>	0.9m x 1.2m H
<b>ARANC43</b>	1.2m x 0.9m H
<b>ARANC44</b>	1.2m x 1.2m H

# Side Gates at Woodford



## Devenish Gate

- Heavy duty tongue and groove timber
- Framed and pressure treated
- Braced for strength

**DEV33** 0.9m x 0.9m H  
**DEV36** 0.9m x 1.8m H



## Achill Gate

- Heavy duty tongue and groove timber
- Framed and pressure treated
- Braced for strength

**ACH33** 0.9m x 0.9m H  
**ACH36** 0.9m x 1.8m H



## Rathlin Gate

- Heavy duty tongue and groove timber
- Framed and pressure treated
- Braced for strength

**RATH33** 0.9m x 0.9m H  
**RATH36** 0.9m x 1.8m H



## TGV Gate

- Heavy duty tongue and groove timber
- Framed and pressure treated
- Braced for strength

**TGVG** 0.9m x 1.8m H



## Inish Gate

- Mortice and tenon joints
- Single sided
- Planed and pressure treated timber

**INISH33** 0.9m x 0.9m



## Woodford Gate Post

- Douglas Fir timber
- Pressure treated
- \*Planed Finished

**WGP655** 1.8m 125 x 125mm\*  
**WGP666** 1.8m 150 x 150mm\*  
**WGP55** 2.4m 125 x 125mm  
**WGP66** 2.4m 150 x 150mm  
**WGP77** 2.4m 175 x 175mm  
**WGP88** 2.4m 200 x 200mm



## Special Top Post

- Douglas Fir timber
- Pressure treated

**DTP55** 2.4m 125 x 125mm  
**DTP66** 2.4m 150 x 150mm  
**DTP77** 2.4m 175 x 175mm  
**DTP88** 2.4m 200 x 200mm



## Diamond Top Post

- Douglas Fir timber
- Pressure treated

**STP55** 2.4m 125 x 125mm  
**STP66** 2.4m 150 x 150mm  
**STP77** 2.4m 175 x 175mm  
**STP88** 2.4m 200 x 200mm



## GATEMATE



### Standard Double Strap Hinge Set

<b>HANG12</b>	300mm Galvanised
<b>HANGS</b>	450mm Galvanised
<b>HANGL</b>	600mm Galvanised

<b>HANGSB</b>	450mm Epoxy Black
<b>HANGLB</b>	600mm Epoxy Black



### Double Strap Hinge Set with Hook on Plate

<b>HANGSC</b>	450mm Galvanised
<b>HANGLC</b>	600mm Galvanised



### Double Strap Hinge Set with adjustable hook on plate

<b>HANGAS</b>	450mm Galvanised
<b>HANGAL</b>	600mm Galvanised



### Single Strap Hinge with hook on plate - prepacked

<b>GMHSS12</b>	300mm Galvanised
<b>GMHSS18</b>	450mm Galvanised
<b>GMHSS24</b>	600mm Galvanised



### Light Tee Hinge - prepacked

<b>TH4G</b>	100mm Galvanised
<b>TH6G</b>	150mm Galvanised
<b>TH8G</b>	200mm Galvanised
<b>TH10G</b>	250mm Galvanised

<b>TH4B</b>	100mm Epoxy Black
<b>TH6B</b>	150mm Epoxy Black
<b>TH8B</b>	200mm Epoxy Black
<b>TH10B</b>	250mm Epoxy Black



### Weighty Scotch Tee Hinge - prepacked

<b>WSTH4G</b>	100mm Galvanised
<b>WSTH6G</b>	150mm Galvanised
<b>WSTH8G</b>	200mm Galvanised
<b>WSTH10G</b>	250mm Galvanised
<b>WSTH12G</b>	300mm Galvanised



### Gate Kit - prepacked

<b>PKGKIT</b>	Galvanised
<b>PKGKITB</b>	Black

## GATEMATE



### Hook On Plate

<b>GHCP</b>	100mm sq Galvanised
<b>GHCPA</b>	100mm sq Adjustable Galv
<b>GHCPA6</b>	150mm sq Adjustable Galv

<b>GHCPAB</b>	100mm sq Adjustable Epoxy Black
<b>GHCPB</b>	100mm sq Epoxy Black



### Hooks to Build

<b>GHCP2</b>	19mm Pin Galvanised
--------------	---------------------



### Loop Over

<b>LOOP6</b>	150mm Galvanised
<b>LOOP</b>	350mm Galvanised
<b>LOOP6B</b>	150mm Epoxy Black
<b>LOOPB</b>	350mm Epoxy Black



### Garage Drop Bolt - prepacked

<b>GMGDBOLT12</b>	300mm Galvanised
<b>GMGDBOLT</b>	450mm Galvanised
<b>GLBOLT</b>	450mm Lockable Galvanised
<b>GMGDBOLT24</b>	600mm Galvanised
<b>GDBOLT B</b>	450mm Epoxy Black



### Field Gate Shot Bolt

<b>SBOLT</b>	Galvanised
--------------	------------



### Spring Loaded Bolt

<b>SPBOLT</b>	Galvanised
---------------	------------



### Spring Loaded Bolt Animal Bolt - Prepacked

<b>GMAB</b>	Galvanised
-------------	------------

## GATEMATE



### Auto Gate Catches - Prepacked

<b>AUTOLA</b>	Galvanised
<b>AUTOLAB</b>	Epoxy Black



### Twisted Ring Gate Catch - Prepacked

<b>TRLATCHG</b>	Galvanised
<b>TRH</b>	Galvanised Handle Only
<b>TRLATCH</b>	Epoxy Black
<b>TRHB</b>	Epoxy Black Handle Only



### Tower Bolt - Prepacked

<b>TB4G</b>	100mm Galvanised
<b>TB6G</b>	150mm Galvanised
<b>TB8G</b>	200mm Galvanised

<b>TB4B</b>	100mm Epoxy Black
<b>TB6B</b>	150mm Epoxy Black
<b>TB8B</b>	200mm Epoxy Black



### Pad Bolt - Prepacked

<b>PADB4</b>	100mm Galvanised
<b>PADB6</b>	150mm Galvanised
<b>PADB8</b>	200mm Galvanised
<b>PADB10</b>	300mm Galvanised

<b>PADB4B</b>	100mm Epoxy Black
<b>PADB6B</b>	150mm Epoxy Black
<b>PADB8B</b>	200mm Epoxy Black



### Heavy Cross Pattern Door Bolt - Prepacked

<b>CODBOLT</b>	300mm Galvanised
<b>CODBOLT18</b>	450mm Epoxy Black



### Cabin Hooks Cast Pattern - Prepacked

<b>CHOOK4</b>	100mm Galvanised
<b>CHOOK6</b>	150mm Galvanised
<b>CHOOK8</b>	200mm Galvanised
<b>CHOOK10</b>	300mm Galvanised

<b>CHOOK4B</b>	100mm Epoxy Black
<b>CHOOK6B</b>	150mm Epoxy Black
<b>CHOOK8B</b>	200mm Epoxy Black
<b>CHOOK10B</b>	300mm Epoxy Black



## GATEMATE



### Spring Loaded Gate Wheel

<b>SPGWM</b>	Medium
<b>SPGWH</b>	Heavy Duty



### Gate Return Spring - Prepacked

<b>GRS</b>	Galvanised
<b>GRSB</b>	Epoxy Black



### Plate With Hook - Prepacked

<b>HOP</b>	50mm x 50mm Galvanised
------------	------------------------



### Plate With Staple - Prepacked

<b>SOP</b>	50mm x 50mm Galvanised
------------	------------------------



### Plate With Ring - Prepacked

<b>JUMPB</b>	1.52m Galvanised
--------------	------------------



### Adjustable Jump Cup Bracket

<b>ROP</b>	50mm x 50mm Galvanised
------------	------------------------



### Adjustable Jump Cups

<b>JUMPCC</b>	Cupped Galvanised
<b>JUMPCS</b>	Sprung Galvanised

# Play at Woodford



## Woodford Xpress Play Tower

NEW

- Quick and easy installation
- Supplied with pre-made components
- Planed finish for safety and comfort
- Pressure treated Scandinavian whitewood
- 97mm x 97mm Uprights
- Includes slide - choice of colours
- Includes Boat Style Steering Wheel and Periscope

### XPRESSM

### Medium Tower

Overall size 1.2m x 1.2 x 2.72mH  
Platform Height 1.15m    2.4m Slide

### XPRESSL

### Large Tower

Overall size 1.2m x 1.2m x 3.05mH  
Platform Height 1.45m    3.0m Slide



# Jungle Gym at Woodford



For more details a full colour brochure is available or alternatively you can view all the products on [www.junglegym.ie](http://www.junglegym.ie)

## PLAYTOWERS

<b>JGSWK</b>	Jungle Swing
<b>JGPKK</b>	Jungle Peak
<b>JGTOK</b>	Jungle Tower
<b>JGCAK</b>	Jungle Castle
<b>JGCLK</b>	Jungle Club
<b>JGCASAK</b>	Jungle Casa
<b>JGHOMEK</b>	Jungle Home
<b>JGHUK</b>	Jungle Hut
<b>JGHOK</b>	Jungle House
<b>JGCOK</b>	Jungle Cottage
<b>JGCUK</b>	Jungle Cubby
<b>JGSHK</b>	Jungle Shelter
<b>JGCBK</b>	Jungle Cabin
<b>JGLOK</b>	Jungle Lodge
<b>JGVIK</b>	Jungle Villa
<b>JGBAK</b>	Jungle Barrack
<b>JGCHK</b>	Jungle Chalet
<b>JGFOK</b>	Jungle Fort
<b>JGMAK</b>	Jungle Mansion
<b>JGBNK</b>	Jungle Barn
<b>JGFAK</b>	Jungle Farm
<b>JGPAK</b>	Jungle Palace

## PLAYHOUSES

<b>JGPLAYK</b>	Jungle Playhouse
<b>JGPHFLK</b>	Jungle Playhouse L
<b>JGPHFXLK</b>	Jungle Playhouse XL
<b>JGCRAZYK</b>	Crazy Playhouse
<b>JGCRAZYFXLK</b>	Crazy Playhouse XL

## SLIDES

<b>JGS23B</b>	2.37m Blue Slide
<b>JGS23G</b>	2.37m Green Slide
<b>JGS23R</b>	2.37m Red Slide
<b>JGS23Y</b>	2.37m Yellow Slide
<b>JGS23AG</b>	2.37m Apple Green Slide
<b>JGS30B</b>	3.0m Blue Slide
<b>JGS30G</b>	3.0m Green Slide
<b>JGS30R</b>	3.0m Red Slide
<b>JGS30Y</b>	3.0m Yellow Slide
<b>JGS30AG</b>	3.0m Apple Green Slide

## MODULES

<b>JGSWINX</b>	Jungle Swing Module X'tra
<b>BRSMK</b>	BR Swing Module*
<b>JGCMX</b>	Jungle Climb Module X'tra
<b>JGBMK</b>	Jungle Bridge Module
<b>JGBALMK</b>	Jungle Balcony Module
<b>JGMINIP</b>	Jungle Mini Picnic Module
<b>JGMINIM</b>	Jungle Mini Market Module
<b>JGBOM</b>	Jungle Boat Module
<b>JGTRM</b>	Jungle Train Module
<b>JGPHMS</b>	Jungle Playhouse Module 1.25cm
<b>JGPHML</b>	Jungle Playhouse Module 1.45cm
<b>JGBLK</b>	Jungle Bridge Link
<b>JGNLK</b>	Jungle Net Link

*\* Swing Accessories sold separately*



## HY-LAND

<b>2 Users</b>	Hy-land Swing
<b>2 Users</b>	Hy-land Swing Module
<b>4 Users</b>	Project 1
<b>4 Users</b>	Project 2
<b>5 Users</b>	Project 3
<b>6 Users</b>	Project 4
<b>6 Users</b>	Project 5
<b>8 Users</b>	Project 6
<b>10 Users</b>	Project 7
<b>12 Users</b>	Project 8

## PROJECT Q

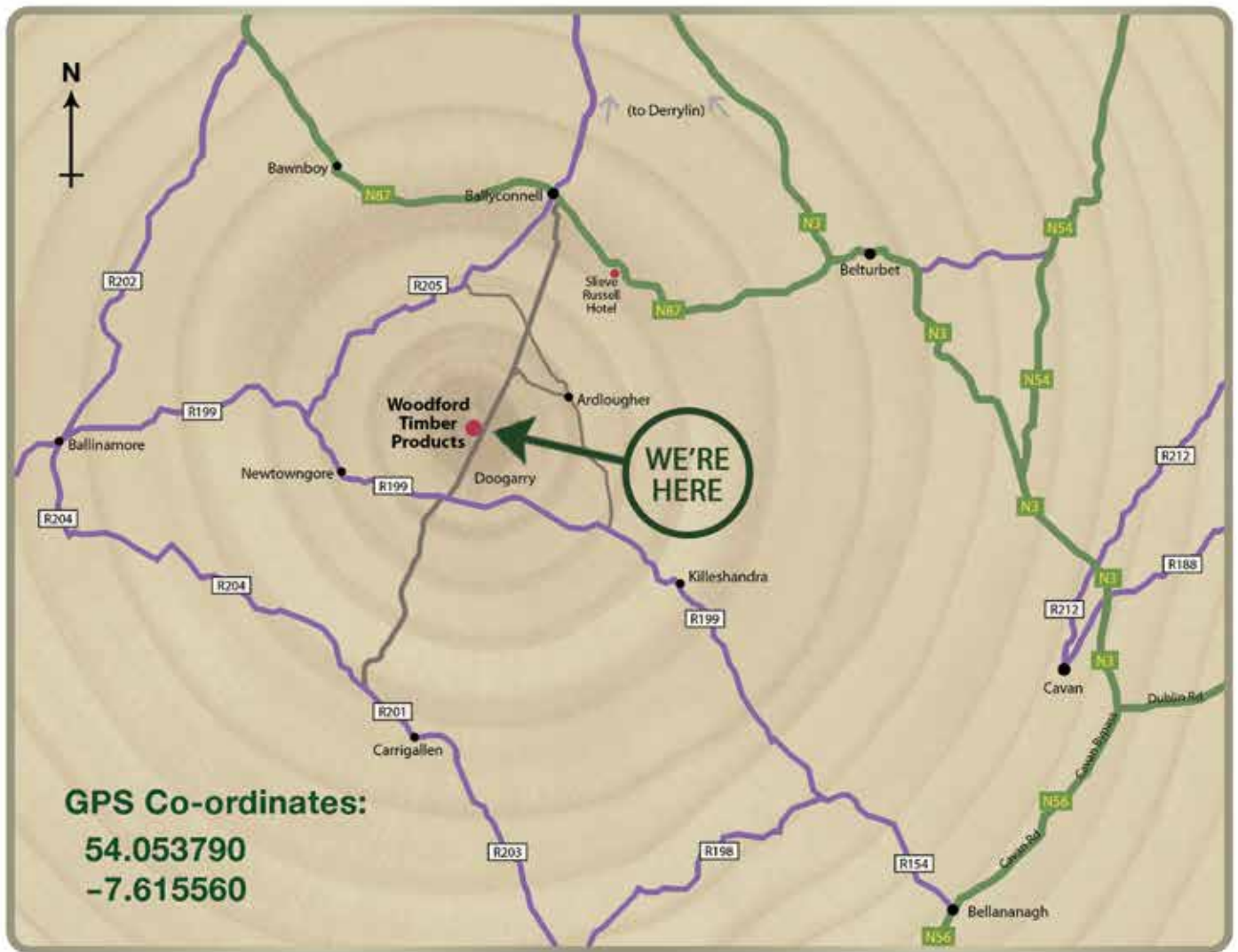
<b>5 Users</b>	Project Q1
<b>5 Users</b>	Project Q2
<b>6 Users</b>	Project Q3
<b>7 Users</b>	Project Q4

## ACCESSORIES

<b>JGSWSK</b>	Jungle Swing Seat Kit
<b>JGSLSK</b>	Jungle Sling Seat Kit
<b>JGTDK</b>	Jungle Twist Disk Kit
<b>JGBSWK</b>	Jungle Baby Seat Kit
<b>BRBSG</b>	BR Baby Seat - Grow with me
<b>JG2SE</b>	Jungle 2 Seater Seat Kit
<b>BRWRT</b>	BR Wooden Ring Trapeze
<b>JGROCKK</b>	Jungle Rock Wall
<b>BRFPRED</b>	BR Fireman's Pole
<b>BRRL</b>	BR Rope Ladder
<b>JG1SMK</b>	Jungle 1 Step Ladder
<b>JGCR</b>	Jungle Climbing Rope
<b>BRROCK</b>	BR Climbing Stones Red - Mixed
<b>JGSWH</b>	Jungle Steering Wheel
<b>BRBSW</b>	BR Boat Steering Wheel
<b>JGPHONE</b>	Jungle Fun Phone
<b>JGTT</b>	Jungle Talking Tube
<b>JGSTAR</b>	Jungle Staroscope
<b>JGPEEK</b>	Jungle Peekoscope
<b>BRSCOPE</b>	BR Periscope
<b>BRBINO</b>	BR Binoculars
<b>BRLB</b>	BR Letter Box
<b>BRBBG</b>	BR Boxing Bag - Green
<b>BRBBB</b>	BR Boxing Bag - Blue
<b>BRBBR</b>	BR Boxing Bag - Red
<b>BRSWIBEE</b>	BR Swibee
<b>BRPICNIC</b>	BR Pic Nic Table
<b>JGBUCKET</b>	Jungle Bucket
<b>JGTTM</b>	Jungle Tic Tac Toe
<b>BRZIP2</b>	BR Zip Wire - 30m
<b>BRMS</b>	BR Monkey Swing for Zip Wire
<b>JGRG</b>	Green Rope 5m
<b>JGRC</b>	Jungle Rope Connectors
<b>JGSHLS</b>	Jungle Swing Hooks LS
<b>JGSHBT</b>	Jungle Swing Hooks BT
<b>BRSHO</b>	BR Swing Hooks
<b>JGGANC</b>	Jungle Ground Anchors
<b>JGHG</b>	Jungle Handgrips







# Woodford

TIMBER PRODUCTS

Skellan  
Doogarry  
Co. Cavan

T: 049 4333 133  
F: 049 4333 134  
E: [info@woodford.ie](mailto:info@woodford.ie)



[www.woodford.ie](http://www.woodford.ie)



[www.facebook.com/WoodfordTimberIreland](https://www.facebook.com/WoodfordTimberIreland)